



# Enterprise Toolbar



**iPBX Enterprise Toolbar** is an integrated toolbar that enables users to make and accept phone calls and change telephone settings from within Microsoft Outlook, Internet Explorer, or Mozilla Firefox. iPBX Enterprise Toolbar is a simple and efficient tool, providing one-click access to many call handling functions.

## iPBX Enterprise Toolbar Benefits

### Improves Productivity

Because iPBX Enterprise Toolbar integrates with Microsoft Outlook, Internet Explorer or Mozilla Firefox, users can work within the single application more efficiently. Duplication of contacts and directories is not required.



### Easy to Use

Basic call control is easy and intuitive. User help functions are available during any operation with a HTML user manual built into the application.

### Integrated Call Processing

iPBX Enterprise Toolbar seamlessly integrates with all iPBX services for professional call handling.

### Minimal Impact on System Resources

iPBX Enterprise Toolbar requires very little system resources and has minimal impact on host applications. Storage of all service settings is centrally located in the hosted environment to ensure data integrity.

**CONTACT INFORMATION**

**Customer Care Line**  
For service trouble reporting and resolution  
(877) 344-7441

**iPBX**  
For customer support  
Comm  
(888) 899-2268

**Sales**  
For questions about existing accounts, or  
or information on new services.  
(866) 438-3724  
(781) 862-8300

[Sales Contact Form](#)

**Billing Inquiries**  
For questions about your DSCI invoice.  
(888) 899-2268

*iPBX Enterprise Toolbar lets you dial directly from a web page with a single click.*

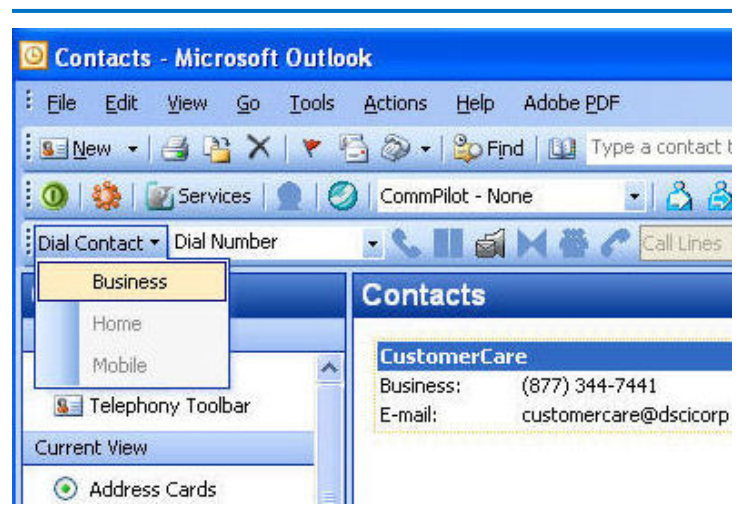




## Enterprise Toolbar Features

Feature	Feature Description
<b>User-Friendly Call Control</b>	Logical workflow and intuitive toolbar make calling functions such as dialing Outlook contacts or soft pickup easy to initiate.
<b>Click to Dial</b>	Search Outlook contacts and place calls with one click. Also dial phone numbers from within a web browser with a single click.
<b>Access Multiple Directories</b>	Search and access personal/group directories for one-click dialing. Microsoft Outlook contacts can be dialed directly from Contacts pane or vCard.
<b>Caller ID</b>	Incoming calls are checked against Outlook and iPBX directories to supply caller ID.
<b>View Call Histories</b>	Access call logs of missed, received, and dialed numbers from within Internet Explorer, Microsoft Outlook and Mozilla Firefox with one click.
<b>Change Telephony Settings</b>	Manage call handling configurations such as call forwarding, do not disturb, anonymous call rejection and external caller ID delivery from within Internet Explorer, Microsoft Outlook and Mozilla Firefox.
<b>Advanced Call Control Functions</b>	Initiate soft pickup (with pop-up notification), 3-way conference calling, and transfer of incoming calls to voicemail from iPBX Enterprise Toolbar.

Feature	Feature Description
<b>Access Advanced Calling Functions</b>	Manage services such as automatic call back, speed dial, and call waiting from within Internet Explorer, Microsoft Outlook and Mozilla Firefox.
<b>Web Portal Auto-Login</b>	Automatically log into the iPBX Web Portal without having to enter your username and password.
<b>Pop-Up Notification</b>	Pop-up “toast” notification displays when user receives or initiates a call. Calls can be handled directly from the display.
<b>On-screen Help Functions</b>	User help functions are available during any operation with a HTML user manual built into the application.



*Enterprise Toolbar integrates with Outlook, Explorer or Firefox for call control and configuration functions.*



Building Better Business Networks. Together.

866.438.3724 | [www.dscicorp.com](http://www.dscicorp.com)