

ipbx Quick Download Guide/Enterprise Toolbar

1. Open your Internet browser and go to the following link:

<ftp://clients:DSCI@ftp.dsci-net.com/>

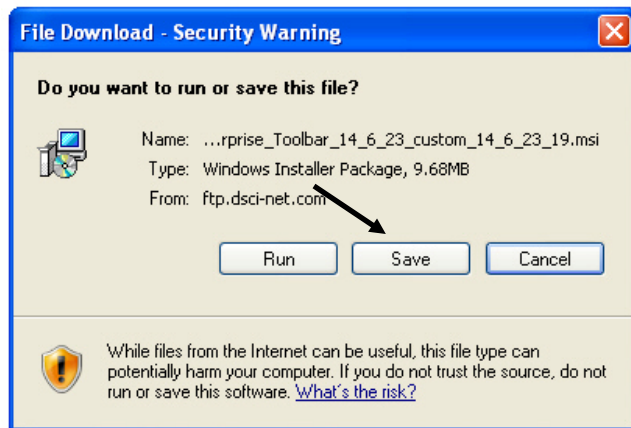
2. Select **Enterprise Toolbar**.



3. Select the file ending in **.msi***



4. Select **Save**.



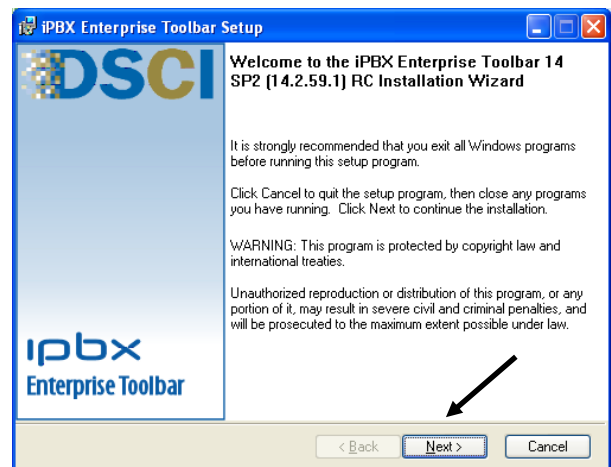
5. Close Microsoft Outlook and any open browsers including Internet Explorer and Firefox.

* Software version for download may differ from printed guide. Software posted to FTP site is the most current version.

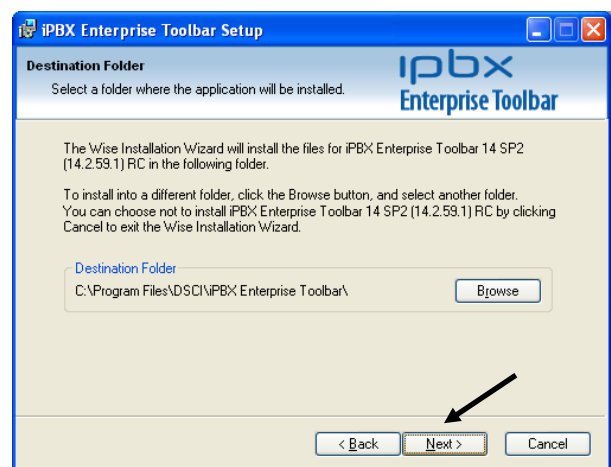
6. Select the client on your desktop.



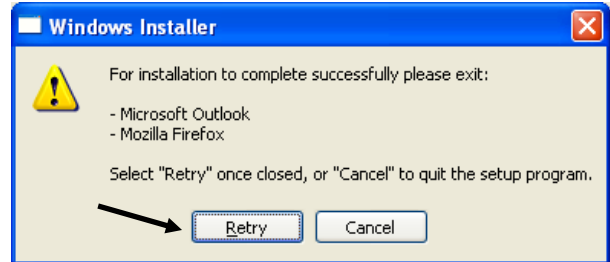
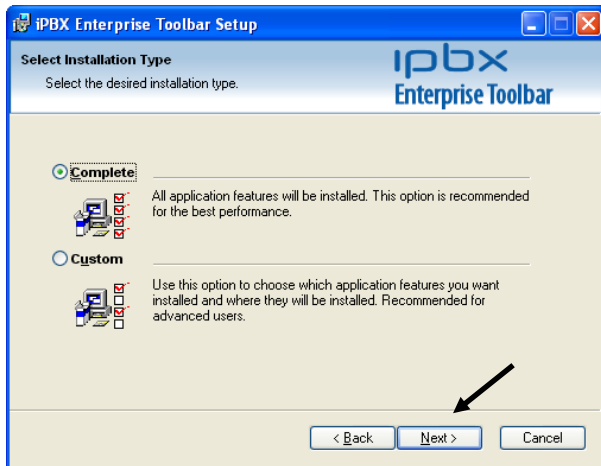
7. Click **Next** on the initial setup screen.



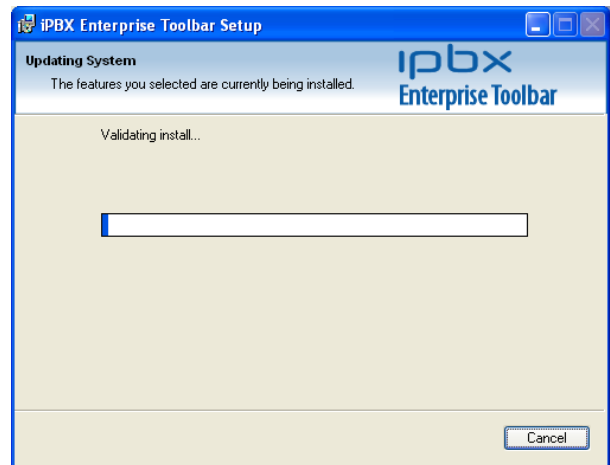
8. Click **Next** on the Destination Folder screen.



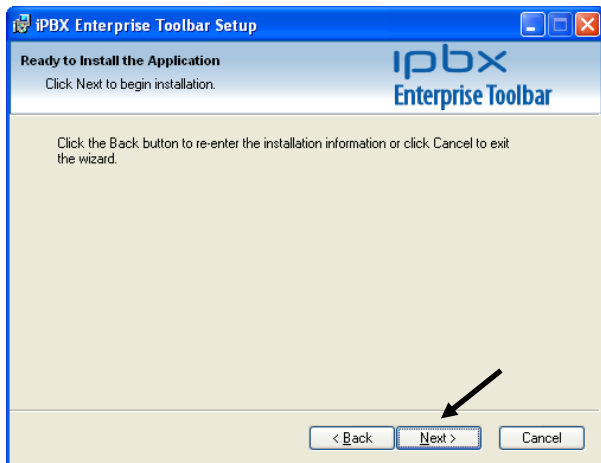
9. Click **Next** on the Installation Type screen.



Install will proceed.



10. Click **Next** on the Ready to Install screen.




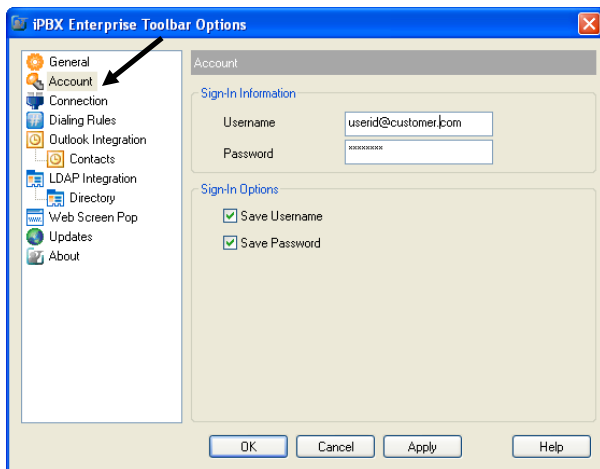
12. Click **Finish** to end the client software installation.



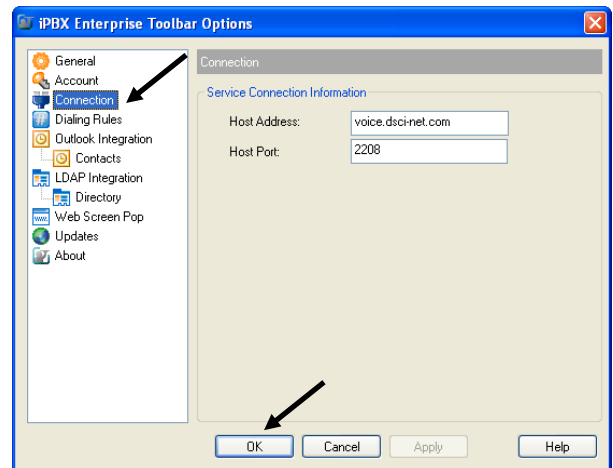
11. If you did not close Internet Explorer, Firefox and Outlook (step 5), you will see this message. Close programs and select Retry.

ipbx Quick Download Guide/Enterprise Toolbar

13. Once installed, open Microsoft Outlook, Internet Explorer or Firefox to launch the application.
14. Select the Options icon 
15. Select Account. Enter your username and password information. This is the same log-on used for the DSCI Web Portal. If you do not know this information, your iPBX Administrator can help you.



16. Select Connection. Confirm the Host Address is: voice.dsci-net.com and the Host Port: 2208.



17. If any changes were made, select OK to confirm changes.
18. You can now log in and begin using the toolbar!

